

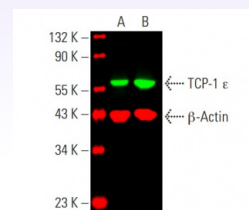
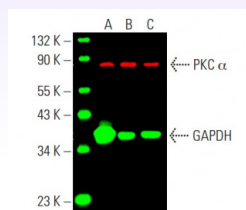
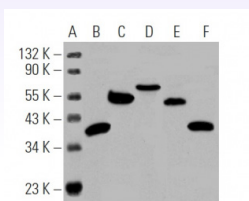
NEW!

Cruz Marker™

internal MW standards coupled
with Cruz Marker™ detection antibodies
for chemiluminescent (HRP) and
Near-Infrared (AF680 or AF790)
WB applications.

With the purchase of **2 or more**
primary antibodies, receive:

(1) Cruz Marker™ MW Standards (sc-2035)



and **choice of one (1) MW Tag antibody.**

CHOOSE ONE:

Cruz Markers™ MW Tag-Alexa Fluor® 680: (sc-516730)

Cruz Markers™ MW Tag-Alexa Fluor® 790: (sc-516731)

Cruz Markers™ MW Tag-HRP: (sc-516732)

Cruz Markers™ MW Tag (unconjugated): (sc-516729)

Direct Conjugate Monoclonal Primary Antibodies

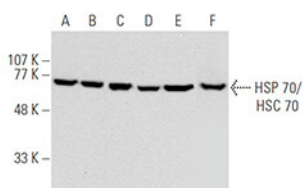
CONJUGATED MONOCLONAL ANTIBODIES FOR DIRECT WESTERN BLOTS OR STAINING: [Eliminates need for secondary antibody]

Santa Cruz Biotechnology has expanded its monoclonal antibody product line to over 8,300 primary monoclonal antibodies conjugated to:

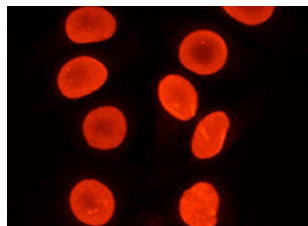
- AC
- HRP
- FITC
- PE
- Alexa Fluor® 488
- Alexa Fluor® 647
- Alexa Fluor® 546
- Alexa Fluor® 594
- Alexa Fluor® 680
- Alexa Fluor® 790

Alexa Fluor® 680 or Alexa Fluor® 790 can be used with Near-Infrared (NIR) detection systems, such as LI-COR®/Odyssey®, iBright™ FL1000, FluorChem™, Typhoon, Azure and other comparable systems.

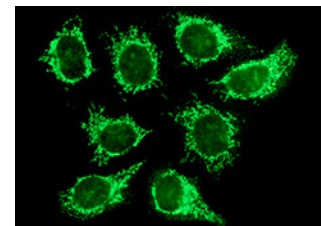
Alexa Fluor® 488, Alexa Fluor® 546, Alexa Fluor® 594 or Alexa Fluor® 647 can be used with RGB fluorescent imaging systems, such as iBright™ FL1000, FluorChem™, Typhoon, Azure and other comparable systems.



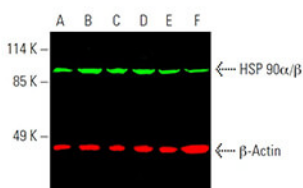
Direct Western Blot: HSP 70/HSC 70 (W27) HRP



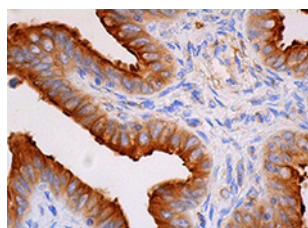
Direct IF Staining
Lamin A/C (636) PE



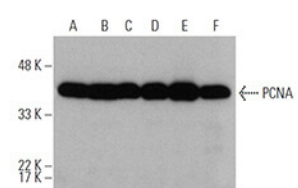
Direct IF Staining
Thrombin R (ATAP2) AF488



Direct near-infrared western blot analysis : HSP 90α/β (F-8) Alexa Fluor® 680 and β-Actin (C4) Alexa Fluor® 790



Direct IHC Staining
β Tubulin (D-10) HRP



Direct Western Blot: PCNA (PC10) HRP

Alexa Fluor® is a trademark of Molecular Probes Inc. LI-COR® and Odyssey® are registered trademarks of LI-COR Biosciences.